

J800

INSTALLATION GUIDE FOR EXCAVATORS WITH SUSPENSION GROUP NUMBERS:

124-3926
164-0503
164-0478
188-0886
229-9077
240-5063

To ensure correct fit for your machine.
Confirm your CAT Suspension
Group Number and correct
Mounting Centers.

UPDATED: 03/09/19



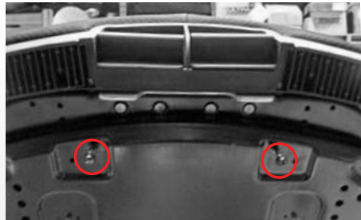
Phone: 1-800-667-7328
Fax: 1-888-667-7328
www.ultraseat.com

J800 SEAT UPPERS ON CAT EXCAVATORS INSTALLATION GUIDE



**Product in photo(s) may be different then purchased product,
For additional photos and information please visit
www.ultraseat.com*

15002205



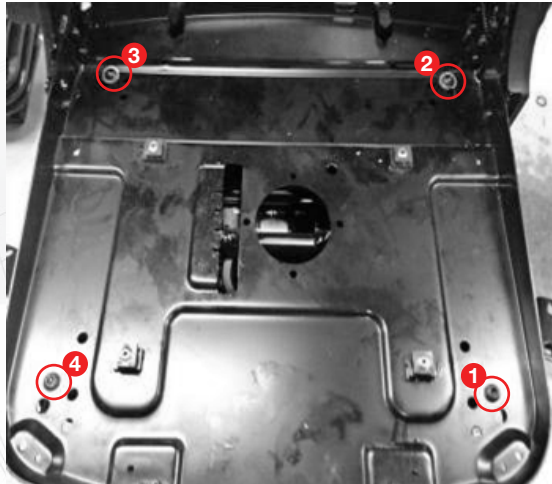
STEP 1

Remove the 2 screws indicated in the picture below to remove the seat cushion.



STEP 2

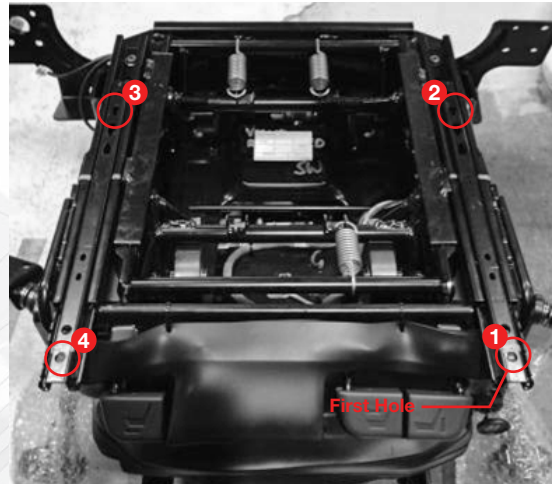
Once the 2 screws are out, lift up on both the seat tilt and height levers and slide the seat cushion away from the frame (towards you) and lift off seat cushion..



STEP 3

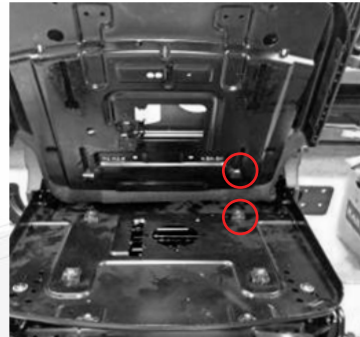
Find the correct mounting holes that match your suspension/ rails. (Holes 1, 2, 3 & 4 are EXAMPLES ONLY)

Group Number	Side to Side	Front to Back
124 3926	14-3/8" (365mm)	11" (280mm)
164 0503	14-3/8" (365mm)	11" (280mm)
229 9077	14-3/4" (375mm)	11" (280mm)
240 5063	14-3/4" (375mm)	11" (280mm)



STEP 4

Attach the seat frame to the top of your suspension.



STEP 5

Once the seat frame is mounted to the slide rails then slide the seat cushion back onto the frame making sure you lift on both seat tilt and height levers. To slide the seat cushion back onto the frame you must line up the plastic guides to the slots in the bottom of the seat cushion (all 4 locations).

NOTE: After the seat cushion is installed on the frame the 2 screws removed under the seat frame at the beginning (step 1) must be reinstalled. Make sure the seat/slide rails are moved all the way back.

Please visit www.ultraseat.com for more information regarding this product.

J800 INSTALLATION GUIDE FOR A CAT EXCAVATOR