

COVER KIT HEATER SWITCH GROMMET

INSTALLATION GUIDE

COVER KIT HEATER SWITCH GROMMET



ULTRA SEAT CORPORATION

04/13/17

15001104

1

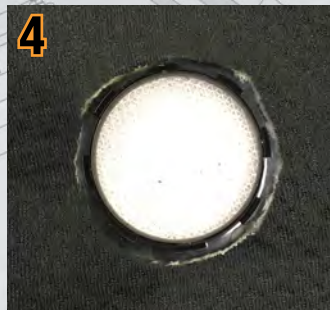
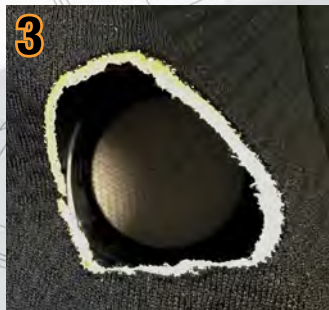
Start installing the backrest cover on your seat, locate the switch and place either piece of the grommet over top of the switch area and trace the inside circle of the grommet. We recommend a fine tipped marker like a sharpie for this step.

**2**

Remove the backrest cover once area is marked and place on a flat surface for step 3.

**3**

You will need cut out the circle you've just traced onto the fabric. When finished you will need to insert the grommet piece with the teeth and align it with the hole you cut out.

**4**

Next take the second piece of your grommet and place it on top of the piece you've inserted inside. Press firmly until all areas are snapped together.

**5**

You can go ahead and fully install the backrest cover onto your seat. Once complete your switch area should be accessible similar to the switch pictured to the right.



**Cover Kit with
Heater Kit Switch
Grommet installed.**

